

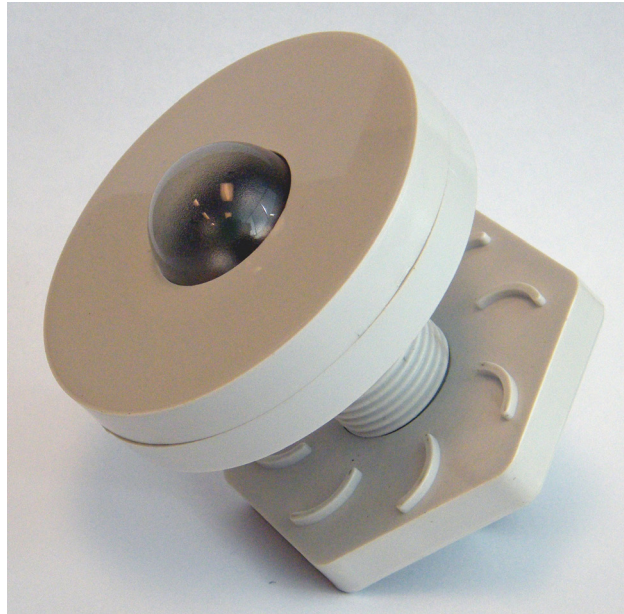
Lumenergi® PS-P-100™ Active Analog Photosensor

Model	
Lumenergi PS-P-100	
Photosensor Usage	
<ul style="list-style-type: none"> • Provide raw ambient light data to a lighting control system 	
Key Features	
<ul style="list-style-type: none"> • Plug-and-play compatibility with the Lumenergi LMCS • Easy, error-resistant installation • Low profile, unobtrusive • Supports energy saving and cost reduction efforts by sending data about light levels to the lighting control system • 5 year warranty 	
Parameters	
Parameter	Value
Open circuit voltage	450 mV
Temp. coefficient	-2 mV/K
Sensitivity	9 nA/lx
Half-sensitivity angle	50 degrees
Peak wavelength	565 nm
Bandwidth	420-675 nm

The Lumenergi PS-P-100 active photosensor provides an analog signal to the Lumenergi **Lighting Management and Control System (LMCS™)**, allowing the LMCS to keep overall light levels constant as sunlight ebbs and flows. This saves energy, cuts costs, and avoids overlighting.

Installation is quick and error-resistant. Designed for standard drop ceilings, the photosensor consists of two pieces that thread together through the ceiling panel via a 1.125" hole.

The sensor sends data over the DALI network, connecting via the iB-100 Intelligent Dimming Light Driver with the INT-B-1 Class 2 Interconnect Box.



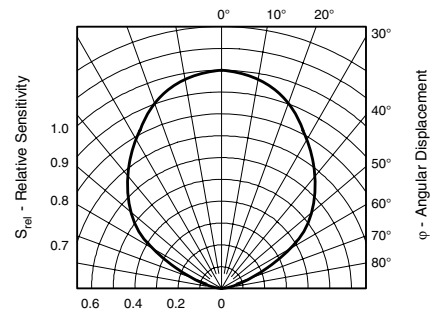
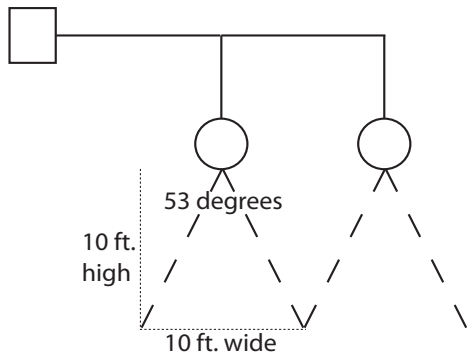
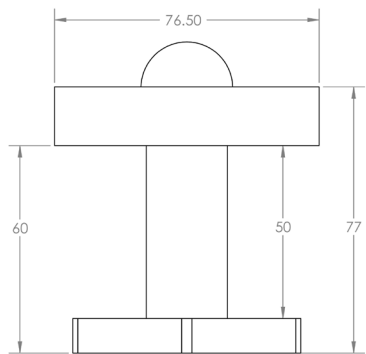
Sensor Information

The PS-P-100 photosensor is based on a Vishay BPW21R Silicon Photodiode and provides an analog output in the hundreds-of-milliVolts range. The sensor uses the DALI network and RJ-45 plugs, for faster

installation than traditional "home run" wiring, fewer errors, and excellent long-term reliability.

When connected to the LMCS, the PS-P-100 photosensor can

enable energy reduction of 30-40% via daylight harvesting, maintaining a constant light level at the work surface. For information on other lighting management systems, please contact Lumenergi.



Warranty and Additional Product Information

Lumenergi's products are covered by a five year materials and workmanship warranty. Please contact Lumenergi for details. Distributors interested in learning about Lumenergi products, please contact partners@lumenergi.com.

Represented by _____



Lumenergi, Inc.
8371 Central Ave, Unit B
Newark, California 94560

Phone 510 894 8647
Fax 510 894 8640

www.lumenergi.com
sales@lumenergi.com

©2007-2010 Lumenergi, Inc. Lumenergi, the Lumenergi logo, LMCS, iB-100, Light Driver, PS-P-100 are trademarks or registered trademarks of Lumenergi, Inc.

Job Name: _____
Job Number: _____

Lumenergi Part Numbers _____