

LUMENERGI™



NetLight™ | CONTROLLER

OVERVIEW

Lumenergi's NetLight Controller family provides the industry's most comprehensive lighting controls. It implements the broadest set of lighting control strategies to enable energy and cost savings of 50-70% compared to non-dimming or magnetic ballast implementations with no control systems.

The NetLight Controller system scales from managing less than 10,000 square foot installations to multi-building million square foot installations. Its advanced user-interface has been developed in collaboration with leading energy research laboratories and corporations.

The NetLight Controller system integrates with Lumenergi's NetLight Driver intelligent ballasts and other manufacturer's ballasts and sensors.

Lumenergi's controller family consists of NetLight Controller Max and NetLight Controller.

The World's Most Advanced Lighting Control

SYSTEM INFORMATION

The NetLight Controller family reduce electrical power and energy consumption by controlling and selectively dimming the light output of fluorescent lamps and other electrical loads in a building.

Consisting of a central NetLight Executive and one or more NetLight Controllers, a typical NetLight system implementation can manage anywhere between ten to hundreds of thousands of square feet of space. The NetLight Executive supervises, monitors, and controls all connected NetLight Controllers.

Within each control zone, the NetLight Controller can vary lamp brightness over a continuous range from OFF to 100%. In lamp zones where photo sensors are also installed, the NetLight Controller periodically samples the measured illumination and adjusts accordingly to provide the right light levels. NetLight Controller, in conjunction with the NetLight Executive, dynamically maintains a preset lighting level range regardless of natural light variations within the space.

Reliability resides at the core of the Lumenergi system. Each NetLight Controller has a stand-alone microprocessor which enables it to function independently of any other NetLight Controller and the NetLight Executive. In the event of network failure, the NetLight Controller continues to operate independently.

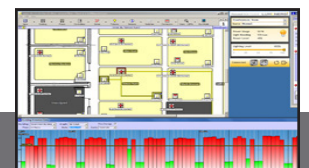
Once the NetLight Controller is configured, it can operate autonomously. However, should a special event or holiday schedule require change, the NetLight Executive can easily communicate updates to all connected controllers.

KEY FEATURES

- Intelligent lighting system compatible with wide range of ballasts and switches
- Implements broadest set of lighting control strategies
- Each NetLight Controller Max manages up to 100,000 square feet of space
- Each NetLight Controller manages up to 20,000 square feet of space
- Smart commissioning tools to reduce deployment costs
- Autonomous operation of each NetLight Controller Max or NetLight Controller allows disconnected and fail-safe operation
- Extensive data gathering and monitoring
- Web, desktop client and mobile device interfaces available
- Meets or exceeds all energy codes

SYSTEM COMPONENTS

NetLight Controller Max	NetLight Controller
Control Outputs	
<ul style="list-style-type: none"> • 32 DALI loops with 2048 DALI devices • 32 industry-standard 0-10VDC zones • 32 contact switches (relays) 	<ul style="list-style-type: none"> • 4 DALI loops with 256 DALI devices
Control Inputs	
<ul style="list-style-type: none"> • 32 switches • 32 photosensors 	Comm: <ul style="list-style-type: none"> • USB - 3 • Ethernet 10/100 - 3



NETLIGHT EXECUTIVE

NetLight Executive building management software is a lighting design control and monitoring software.

It has an easy-to-use interface to configure advanced features such as scheduling and demand response. It provides real-time monitoring of load and lighting levels throughout all managed buildings and monitors up to 32 units of NetLight Controller Max and 128 units of NetLight Controllers.

Lumenergi, Inc.
8371 Central Ave, Unit B
Newark, California 94560

Phone (510) 744.1000
Fax (510) 574.7440

www.lumenergi.com
sales@lumenergi.com

SPECIFICATIONS*

NetLight Controller Max	NetLight Controller
-------------------------	---------------------

Operating Temperature

40°F-104°F

Supply Input Voltage

110-277V (50/60Hz)

Controller Dimensions and Weight

17.25"H x 13.25"W
x 6"D (15 lbs)

7.09" H x 5.87" W
x 3.74"D (4.25 lbs)
7.96" mount

Power Supply Dimensions and Weight

13.75"H x 13.75"W
x 3.25"D (10 lbs)

Not Applicable

Miscellaneous

UL Certified
FCC 47CFR Part 18 Non-Consumer
Class A Sound Rating
ANSI C62.41 Cat. A
Transient Protection
Class 2 Device

NetLight Executive

Server Operating Systems

Windows Platform

Supported Clients

- **Personal Web Client:** Internet Explorer 7,8 on Windows; Firefox 3.0 on Windows and Mac OS X
- **Personal Mobile Client:** iPhone, iPad, Android, and Blackberry Smart Phones







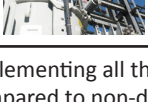
* Specifications are subject to change without notice. Refer to www.lumenergi.com for updated and complete product line information.

WARRANTY

Lumenergi's NetLight Controllers are covered by a one-year limited warranty. Please see Lumenergi's standard warranty.

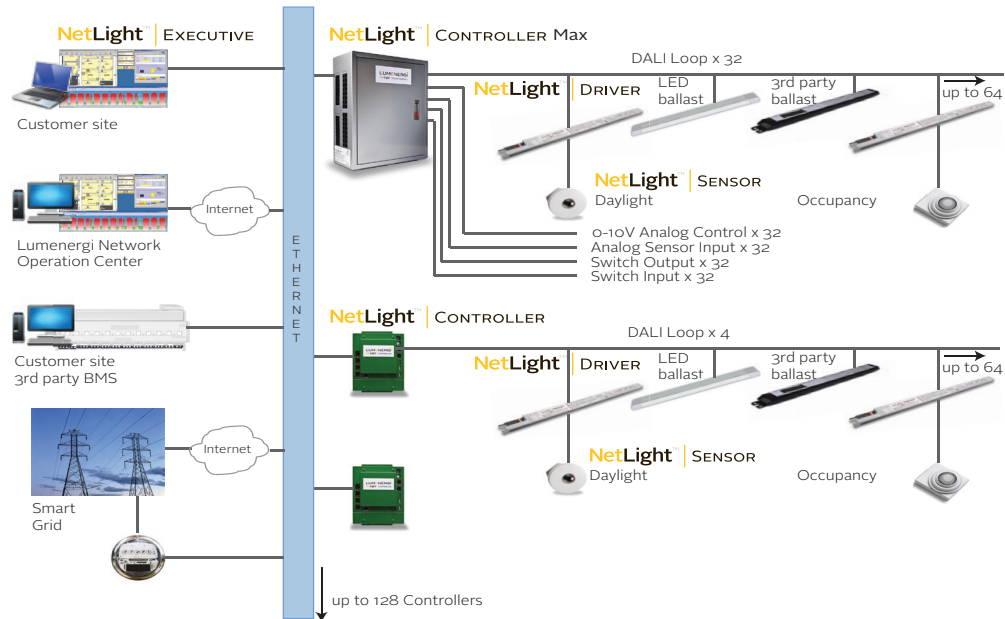
Distributors interested in learning about Lumenergi products, please contact partners@lumenergi.com.

SUPPORTED LIGHTING CONTROL STRATEGIES

	Daylighting In daylight areas, adjust light levels as the sun shifts its position throughout the day to maintain constant light output.
	Task Tuning Provide the right amount of light based on the tasks being performed in a specific area of the building.
	Scheduling Program the system to provide the appropriate lighting configuration during the work day, work week and through different seasons.
	Lumen Maintenance Use less power at the beginning of a lamp's lifecycle (when it is most efficient) and gradually increase power as the lamp ages.
	Occupancy Sensing Lights are dimmed to off state when the system detects that there are no longer occupants in a particular room or area.
	Personal Control Allow individuals to personalize the amount of dimming they prefer in their individual offices or work areas.
	Load Shedding/Demand Response On demand from the utility company or based on facility-mandated goals, reduce power to the lights based on preset priorities.

Implementing all the lighting strategies in concert can reduce energy costs up to 50-70% compared to non-dimming, unmanaged lighting.

NETLIGHT CONTROLLER DEPLOYMENT



Represented By